

RAMSAY CORPORATION

Expertise in Assessments

TESTS FOR SKILLS ASSESSMENT AND DEVELOPMENT

2025 CATALOG

Ramsay Corporation

Boyce Station Offices
1050 Boyce Road
Pittsburgh, PA 15241-3907

Phone (412) 257-0732

Fax (412) 257-9929

Email sales@ramsaycorp.com

Web www.ramsaycorp.com

Apprenticeship 4

Aptitude 5

Basic Skills 6

Crafts & Skilled Trades 7 - 18

Electrical 7

Mechanical 9

Diagnostic 10

MultiCraft 12

Controls & Instrumentation 14

Fabrication 15

Facilities Maintenance 16

Maintenance Planning 17

Fleet Operations & Maintenance 18

People Skills 19

Online Testing Available

Benefits include:

- Prompt availability
- No delivery fees
- Immediate results
- Organization of test results
- Advanced reporting features
- Complimentary technical manuals
- Simplified test security
- Optional scrambled versions

Proctoring Portal Subscription

provides remote proctoring with features including the ability to pause and resume a test. It also allows proctors to see the candidate's responses even if a screen share disconnects.

Fax/Email Answer Sheets

are available as an alternative to Scantron sheets. Benefits include more convenience and immediate scoring.

IMPORTANT NOTICE ABOUT TEST PROCTORING

All of Ramsay Corporation's tests, **paper and online**, must be given in a live proctored environment.

To get the best results from your testing, proctors should:

- Verify the identity of the test taker
- Collect and secure all electronic devices including phones, smartwatches, and other recording devices
- Monitor test takers constantly to ensure they are not receiving assistance from others, looking up answers, or copying/photographing test content

Once a test is compromised, it has little value to you. *Please contact us if you have questions regarding the proctoring process.*

Test Validation

We suggest the completion of a local validation study for organizations that meet any of the following criteria:

- Is a highly visible national or international company
- Has more than 200 employees
- Has a labor agreement
- Has a federal contract
- Has ever had an EEO charge
- Needs professional assistance for setting cutting scores on tests

Call us for more information

The *Uniform Guidelines on Employee Selection Procedures* (1978), developed by the EEOC, Civil Service Commission, Department of Labor, and Department of Justice, are intended to establish a uniform federal position in the area of prohibiting discrimination in employment practices.

A validated test is usually the product of research by a psychologist or a testing expert. The resulting validation report is the documented evidence by a professional researcher of the validity of the selection procedure. In the event of complaint or litigation, the report would usually be entered into evidence. In addition, the author would provide testimony that the report reflects generally-accepted professional practice and is in conformance with the requirements of the *Uniform Guidelines on Employee Selection Procedures*.

Information about the Catalog

Prices shown are for 20 or more tests/credits **of the same title**. There is a minimum purchase quantity of 10 tests/credits with each order, at an increased price. For a complete list of tests and pricing please visit our online catalog at ramsaycorp.com/product-catalog. For more information, suggestions regarding the most applicable assessments for your organization, or to place an order for 10-19 tests, please contact us at (412) 257-0732 or sales@ramsaycorp.com.

Scrambled Tests

Many of our online tests are available in a scrambled version, meaning that the order of questions within each category is randomized. This improves test security when retesting candidates, in testing situations where test-takers might sit in close proximity to one another or could discuss test content. Please see our online catalog to determine if a scrambled version of the test is available.

Add \$2/test.

Experience Levels

These symbols help in test selection by indicating extent of knowledge being evaluated by various tests.



Apprentice/Entry:

Has 0-1 years of training or experience, but needs an additional 2-3 years of training; candidate should be committed to training and progression of a skill.



Trainee:

Has 2-3 years of training or experience, but needs another 1-2 years of training.



Journey:

Has 2-5 years of training and experience.



Advanced Journey-Level:

C, B, and A level tests for starting, intermediate, and advanced candidates.

Tests for Apprenticeship

The use of basic skills measures for acceptance into apprentice and training programs has improved retention and progression in training. The use of job skill tests has resulted in accelerated completion and better work performance by graduates. The following assessments are geared towards apprenticeship and other learner programs.

■ Electrical Apprentice Skills

SKU 226: This assessment was developed to evaluate the ability of any potential electrical apprentices to read and comprehend written material and to measure that person's skills in the areas of arithmetic; pre-schematic reading and signal flow; and electrical principles and troubleshooting. This test contains 84 items in a multiple-choice format. **\$28 per test.**

■ Mechanical Apprentice Skills

SKU 225: This assessment was developed to evaluate the ability of potential mechanical apprentices to read and comprehend written material and to measure that person's skills in the areas of arithmetic; pre-print reading, measurement and assembly; and mechanical principles and troubleshooting. This test contains 84 items in a multiple-choice format. **\$28 per test.**

■ Mechanical Apprentice Skills (Short Form)

SKU 248: 56-item abbreviated version of the Mechanical Apprentice Skills test. **\$28 per test.**

NEW in 2025

■ MultiCraft Apprentice Skills

SKU 224: This assessment was developed to evaluate the ability of any potential multicraft apprentices to read and comprehend written material and to measure that person's skills in the areas of arithmetic; pre-print reading and measurement; and multicraft principles and troubleshooting. This test contains 84 items in a multiple-choice format. **\$28 per test.**

■ MultiCraft Apprentice Skills (Short Form)

SKU 249: 56-item abbreviated version of the MultiCraft Apprentice Skills test. **\$28 per test.**

NEW in 2025

■ Electrical Learner Series

These tests were designed to be less difficult than our Electrical Entry test, but more demanding than a basic skills battery. Each test sold separately. **\$15 per test.**

SKU 171: Reading

SKU 174: Troubleshooting & Problem Solving

SKU 172: Arithmetic

SKU 175: Basic Electricity

SKU 173: Electrical Print Reading

■ Mechanical Learner Series

These tests were designed to be less difficult than our Mechanical Entry test, but more demanding than a basic skills battery. Each test sold separately. **\$15 per test.**

SKU 181: Reading

SKU 184: Reading Prints & Drawings

SKU 182: Arithmetic

SKU 185: Troubleshooting & Problem Solving

SKU 183: Measurement

SKU 186: Basic Mechanical Knowledge

Aptitude Tests

Aptitude tests measure a person's ability to learn and understand concepts and principles. They are NOT designed to measure a person's learned knowledge or skills, but rather the potential to be successful in an apprenticeship or trainee program.

■ Mechanical Aptitude

SKU 110: Developed as a quick evaluation of a person's mechanical aptitude in the areas of: Home Settings; Work — Production & Maintenance; School — Science & Physics; and Hand & Power Tools. This test contains 36 items in a multiple-choice format. Alternate and Spanish forms available. **\$28 per test.**

Updated
in 2021

■ Electrical Aptitude

SKU 111: Developed as a quick evaluation of a person's electrical aptitude in the areas of: Mathematics; Electrical Concepts; Process Flow; Signal Flow; Electrical Schematics; and Electrical Sequences. This test contains 36 items in a multiple-choice format. Alternate and Spanish forms available. **\$28 per test.**

Updated
in 2021

■ MultiCraft Aptitude

SKU 121: Developed as a quick evaluation of a person's mechanical and electrical aptitude, this test measures the same constructs as the mechanical and electrical aptitude tests, but may be used for assessment of applicants who require aptitude in both areas. This test contains 40 items in a multiple-choice format. Alternate and Spanish forms available. **\$28 per test.**

What is a test battery?



A battery is a series of subtests rather than a singular test with categories. Each subtest is scored individually, which means batteries contain multiple hurdles. Proficiency in a subtest should not make up for a deficiency in another. Ex: An excellent score on a Reading subtest should not make up for scoring poorly on an Arithmetic subtest.

■ Technical Manuals

Manuals are available for most of our tests. The manuals include a description about the development of the test, reliability data and item analyses for different subsets of test takers, available content- and criterion-related validity data, normative data and percentile rankings. **Manuals do not contain copies of tests or answer keys.** Manuals are available to download free with the purchase of online tests.

Printed manuals are \$25 per manual. The SKU number is the same as the related test.

Basic Skills Tests

■ Combined Basic Skills

SKU 200: This assessment was developed to enable a quick evaluation of literacy and other basic skills required in manufacturing and processing. The four subtests are: Reading; Arithmetic; Inspection & Measurement; and Process Monitoring & Problem Solving. Alternate and Spanish forms available. **\$20 per test.**

Specialized Combined Basic Skills tests available:

SKU 201: Chemical Operator	SKU 210: Customer Service
SKU 202: Custodial Services	SKU 211: Tools
SKU 204: Food Industry	SKU 212: Clerical
SKU 206: Team Skills	SKU 213: Operator - Fluid Processing
SKU 207: Water Treatment	SKU 214: Operator Plus

NEW in 2025

NEW in 2025


■ Reading Tests

Designed to measure the ability to read, comprehend, and answer written questions based on a printed passage. Most tests are 40 questions covering five passages with progressively higher levels of readability. Please see our website or contact us to help you select an appropriate reading test for your needs. **\$15 per test.**

■ Arithmetic Tests

Developed to evaluate the ability to perform basic computations at various levels of difficulty. All tests include basic arithmetic using whole numbers. Test options include fractions, decimals, percentages, reading tables and charts, simple formulas, and word problems. Please see our website or contact us to help you select a test for your needs. **\$15 per test.**

■ Quality Control & Other Basic Skills Tests

SKU 228: Assembly Test	SKU 135: Pre-Print Reading
SKU 113: Basic Computer Skills	SKU 93: Precision Measurement
SKU 91: Checking Accuracy	SKU 90: Process Flow
SKU 158: Inspection	SKU 37: Inspection & Measurement
SKU 139: Writing Test	SKU 4: Measurement
SKU 24: Reading Electrical Drawings & Schematics	SKU 54: Measurement, Reading, and Arithmetic 

Electrical Assessments

These assessments test technicians for proficiency in the following categories:

- Digital & Analog Electronics
- Schematics & Electrical Print Reading
- Power Supplies
- Motors
- Controls
- Basic AC/DC Theory
- Construction, Installation, & Distribution
- Test Instruments
- Computers & PLCs
- Electrical Maintenance

■ Electrical Entry

SKU 195: A 60-item test of entry level electrical knowledge and skills for jobs where these skills are necessary parts of job activities. They reflect the knowledge of a first or second year apprentice and are less difficult than our Trainee tests.

Does NOT include Computers & PLCs. **\$28 per test.**

■ Electrical Maintenance Trainee

SKU 17: For use in selecting electrical trainees. The test contains 60 items.

Alternate and Spanish forms available. **\$28 per test.**

■ Industrial Electrician

SKU 231: This 60-item test focuses more heavily on diagnostics and troubleshooting in the industrial setting than our ElecTest. It omits component and sub-component level electronics such as transistors, logic gates, and single-function chips, and focuses on troubleshooting of user-serviceable components and proper installation and maintenance. **\$28 per test.**

■ ElecTest

SKU 47: A 60-item test used for selection of electrical repair and maintenance candidates where practical electrical knowledge and skill are necessary parts of maintenance job activities. Alternate and Spanish forms available. **\$28 per test.**

■ Electrical Troubleshooting

SKU 241: A 36-item troubleshooting test. Provides a higher-level test than Electrical Learner Series — Troubleshooting and Problem Solving. **\$28 per test.**

Categories include:

- AC/DC Circuits
- Schematics & Print Reading
- Motors
- Computers & PLCs
- Construction, Installation, & Distribution

■ Maintenance Electrician B & A

SKU 179: Maintenance Electrician B

SKU 178: Maintenance Electrician A

For use in selecting manufacturing or processing electrical maintenance candidates. Each test contains 60 items. Maintenance Electrician B is a test with more focus on motors and power supplies than ElecTest. Maintenance Electrician A is more difficult than Maintenance Electrician B. Data for both tests indicate very good to excellent reliability. **\$28 per test.**

■ Additional Electrical Tests

SKU 105: Electrician (Chemical)

SKU 152: Electrical Safety Knowledge

SKU 168: Commercial/Residential Electrician

Experience Levels

These symbols help in test selection by indicating extent of knowledge being evaluated by various tests.



Apprentice/Entry:

Has 0-1 years of training or experience, but needs an additional 2-3 years of training; candidate should be committed to training and progression of a skill.



Trainee:

Has 2-3 years of training or experience, but needs another 1-2 years of training.



Journey:

Has 2-5 years of training and experience.



Advanced Journey-Level:

C, B, and A level tests for starting, intermediate, and advanced candidates.

Mechanical Assessments

These tests are designed for selecting technicians and include the following categories:

- Hydraulics & Pneumatics
- Print Reading
- Welding & Rigging
- Power Transmission
- Lubrication
- Pumps & Piping
- Mechanical Maintenance
- Shop Machines
- Tools, Materials, & Equipment

■ Mechanical Entry

SKU 196: A 60-item test of entry level mechanical knowledge and skills for jobs where these skills are necessary parts of job activities. They reflect the knowledge of a first or second year apprentice and are less difficult than our Trainee tests. Alternate form available. **\$28 per test.**

■ Mechanical Maintenance Trainee

SKU 31: For use in selecting mechanical trainees. This test contains 60 items. Alternate and Spanish forms available. **\$28 per test.**

■ MecTest

SKU 16: Used for selection of repair and maintenance candidates. This test contains 60 items. Alternate and Spanish forms available. **\$28 per test.**

■ Mechanical Troubleshooting

SKU 242: A 36-item troubleshooting test. **\$28 per test.**

Categories include:

- Print Reading
- Power Transmission
- Lubrication
- Tool Use & Machines
- Pneumatics & Hydraulics
- Pumps & Piping

■ Mechanical Technician C, B, & A

SKU 189: Mechanical Technician C

SKU 188: Mechanical Technician B

SKU 187: Mechanical Technician A

For use in selecting experienced metals or manufacturing candidates. Each test has 60 items, with C representing the starting level and A the most advanced. Alternate forms available. **\$28 per test.**

Diagnostic Testing

Many companies wish to evaluate their existing workforce to determine strengths and weaknesses and develop training programs accordingly. Ramsay Corporation's Maintest was developed initially for a Fortune 500 Corporation wanting to provide training to their maintenance workforce. That test has been updated and improved in the current version.

In 2017, Ramsay Corporation developed a new test designed to be used as a diagnostic test for incumbent workers, the MultiCraft Diagnostic Test. More recently, Ramsay Corporation developed two related tests: Electrical Diagnostic Test and Mechanical Diagnostic Test.

Advanced Reporting Features

The use of Ramsay Corporation's scoring system provides you with a standard collection of reports. Advanced reports are available with the addition of "Job Profiles," a set of cut scores to apply to test results. These job profiles are created with the help of Ramsay Corporation, either as a part of a validation study and/or with the purchase of an Enterprise Subscription (SKU ES1Y). **\$1400 per year.**

An example of advanced reports can be found below. An overview of all available reports can be found by downloading the Technology Solutions Brochure, at www.ramsaycorp.com/resources/technology-solutions.

Group Gap Analysis Report

Our Gap Analysis Report compares the group's average raw score per section on a test against the cut scores in the job profile.

Section	No. of Items	Average Raw Score (%)	Proportional Cuts	@%	100%	Deviation From Cuts
1: PRINT READING	10	5.34 (53.40%)	6.48 (64.75%)			-1.14 (-11.36%)
2: LUBRICATION	6	4.92 (81.94%)	3.89 (64.75%)			+1.03 (+17.19%)
3: WELDING	6	4.63 (77.14%)	3.89 (64.75%)			+0.74 (+12.39%)
4: MECHANICAL	23	15.33 (66.64%)	14.89 (64.75%)			+0.43 (+6.89%)
5: PNEUMATICS AND HYDRAULICS	10	7.04 (70.37%)	6.48 (64.75%)			+0.56 (+8.63%)
6: MACHINE SHOP	10	7.54 (75.42%)	6.48 (64.75%)			+1.07 (+16.67%)
7: ELECTRICAL	20	11.39 (56.95%)	12.95 (64.75%)			-1.56 (-8.81%)
8: RIGGING	5	3.89 (61.75%)	3.24 (64.75%)			+0.15 (+2.31%)
9: UTILITIES	6	3.00 (51.26%)	3.89 (64.75%)			-0.81 (-13.50%)
10: PLUMBING	5	1.56 (31.18%)	3.24 (64.75%)			-1.68 (-33.65%)
11: CONTROL AND INSTRUMENTATION	21	12.01 (57.28%)	13.60 (64.75%)			-1.59 (-8.75%)
Overall - Maintenance Technician	122	75.91 (62.22%)	79.00 (64.75%)			-3.09 (-8.53%)

Individual Graphical Report

The Graphical Report shows the performance of an individual against the cut scores designated in the job profile.

SECTION	MIN	MAX	STATUS
1. WELDING, PLUMBING, & HVAC			NOT COMPETITIVE
2. ELECTRICAL			COMPETITIVE
3. PNEUMATICS & LUBRICATION			NOT COMPETITIVE
4. SHOP, TOOLS & MACHINES, RIGGING & MISCELL. MECH.			COMPETITIVE
5. MECHANICAL & PRINT READING			COMPETITIVE

Maintest

SKU 29: This 153-item, 2½-hour test measures the practical mechanical and electrical job knowledge of maintenance employees with results reported online. Measures strengths and weaknesses in 21 areas:

- Hydraulics
- Pneumatics
- Welding
- Power Transmission
- Lubrication
- Pumps
- Piping
- Rigging
- Mechanical Maintenance
- Shop Machines, Tools, & Equipment
- Combustion
- Motors
- Digital Electronics
- Schematics & Print Reading
- Control Circuits
- Power Supplies
- Basic AC/DC Theory
- Power Distribution
- Test Instruments
- Computers & PLCs
- Electrical Maintenance

Percentile ranks are provided so you can compare scores among your workers and against a national sample of 21,345 maintenance workers in each of the 21 categories, as well as overall.

Maintest Pricing (per administration):

10 – 19 tests: **\$70.00** 20 – 99 tests: **\$50.00** 100+ tests: **\$45.00**

Alternate and Spanish forms available. **Pricing based on cumulative orders.**

Scrambled versions available for an additional cost. (see pg. 3)

MultiCraft Diagnostic Test

SKU 235: A recent 128-item test designed to evaluate incumbent workforces to determine training deficiencies and needs. Measures strengths and weaknesses in areas similar to the Maintest, but contains more current electrical content. **\$40 per test.**

Updated
in 2021

Electrical Diagnostic Test

SKU 240: This test consists of 10 categories, each with 10 questions. **\$40 per test.**



Mechanical Diagnostic Test

SKU 239: This 100-item test features 10 categories, each with 8 – 12 questions. **\$40 per test.**

MultiCraft Assessments

The MultiCraft tests are for technicians who require knowledge of both electrical and mechanical concepts and principles in the following categories:

- Hydraulics & Pneumatics
- Welding, Cutting, & Rigging
- Power Transmission, Lubrication, Mechanical Maintenance & Shop Machines, and Tools & Equipment
- Pumps, Piping, & Combustion
- Motors, Control Circuits, and Schematics & Print Reading
- Digital & Analog Electronics, Power Supplies, Computers & PLCs, and Test Instruments
- Basic AC/DC Theory, Power Distribution, & Electrical Maintenance

■ MultiCraft Entry

SKU 194: A 60-item test of entry level maintenance knowledge and skills that contains approximately 80% mechanical and 20% electrical content. **\$28 per test.**

■ MultiCraft Trainee

SKU 116: This test includes 60 items in 7 categories related to trainee level maintenance and repair. Alternate and Spanish forms available. **\$28 per test.**

■ MultiCrafTest

SKU 100: This 60-item test is for use in selecting multicrafted maintenance technicians. Alternate and Spanish forms available. **\$28 per test.**

■ Maintenance Troubleshooter

SKU 243: This 60-item test provides an alternative to our MultiCrafTest for organizations not requiring knowledge of board-level electronics. **\$28 per test.**

■ Mechatronics Technician

SKU 247: This 100-item test was developed to aid in the selection of maintenance technicians in advanced, automated manufacturing industries. It covers electrical, computer, and mechanical topics in 11 categories. **\$32 per test.**

■ Multi-Skilled Maintenance Mechanic

SKU 220: This 100-item test is intended to assess practical mechanical, electrical, and computer knowledge and skill for maintenance job activities. It includes questions on Schematics & Electrical Print Reading; Process Control & Calibration; Motors, Motor Controls, & AC/DC Theory; Mechanical & Piping; Computer & PLC; Hydraulics & Pneumatics; Welding; Pumps, Power Transmission & Lubrication; and Shop Machines & Rigging. **\$32 per test.**

■ C, B, & A Mechanic Evaluation

SKU 192: C Mechanic Evaluation

SKU 191: B Mechanic Evaluation

SKU 190: A Mechanic Evaluation

Best used for food, drug, and consumer product industries to assess manufacturing or processing maintenance candidates. These tests include Electrical and HVAC categories. Each test contains 60 items. NOTE: Each level progresses in difficulty, with A Mechanic being the most advanced. Alternate and Spanish forms available. **\$28 per test.**

Additional Tests Available

See our website for a complete list of test titles. The descriptions of the tests include test categories, the number of items in each test, and skill levels.

SKU 57: Cellular Technician

SKU 97: ChemTest

SKU 82: Combustion Control Technician

SKU 123: Drafter (CAD Operator)

SKU 94: Hydraulics

SKU 147: Hydraulic & Pneumatic
Print Reading

SKU 127: Injection Molding Mechanic

SKU 83: Ironworker

SKU 199: Lockout/Tagout

SKU 145: Lubrication Test

SKU 44: Millwright Test

SKU 122: Operating Engineer

SKU 55: PipeTest (Piping & Plumbing)

SKU 143: Pump Test

SKU 107: Sheet Metal Worker

SKU 20: Tool Room Attendant

SKU 109: Toolmaker

SKU 106: Vibration Analysis

SKU 138: Wind Turbine Technician

Controls and Instrumentation

■ PLC Test

2016 Plant Engineering Product of the Year Silver Award

SKU 125: This 60-item test is intended for use with applicants and incumbents for jobs where knowledge of programmable logic controllers is a necessary part of job activities. **\$28 per test.** Categories include:

- PLCs & I/O Basics
- Programming Basics
- Troubleshooting
- Ladder Logic
- Peripherals & Systems
- Relays & Controls

■ Controls Technician

2018 Plant Engineering Product of the Year Bronze Award

SKU 238: A 60-item test that measures the knowledge and skills of a candidate who handles the day-to-day issues or long-term maintenance of PLCs and control systems. **\$28 per test.** Categories include:

- Schematics & Logic Reading
- Sensors & Feedback
- Motors & Drives
- Power Supplies & Distribution
- PLC, DCS, & Networking
- Basic Automation
- Process Control & Instrumentation

■ Variable Frequency Drive Test

SKU 154: This 40-item test was developed in response to requests for a means to evaluate the understanding of maintenance and troubleshooting of VFDs in industrial settings. **\$28 per test.** Categories include:

- Mechanical & Electrical Motor Theory
- Drives
- VFD Components
- Troubleshooting

■ Electronics & Instrumentation Technician

SKU 193: A 100-item test for use in assessing E&I Technicians. Originally developed for a power utility. **\$32 per test.** Categories include:

- Digital & Analog Electronics
- Mechanical
- Electrical Print Reading, Schematics, & Logic
- Computer, PLC, & DCS
- Process Control
- Power Distribution
- AC/DC Theory
- Construction & Installation
- Test Instruments
- Motors

■ Robotics

SKU 223: A 95-item test designed to test knowledge and skill in robotics. **\$32 per test.** Categories include:

- Schematic and Print Reading
- Sensors and Feedback
- Mechanical
- Test Instruments
- Pneumatics
- Computers & PLCs
- Drives and Control
- Robotics

■ Additional Controls & Instrumentation Tests

SKU 104: Instrument Technician (Chemical)

SKU 22: Reading (E&I)

SKU 81: InstrumenTest

SKU 7: ElectronTest

Fabrication

CNC Trainee

SKU 221: This is a 90-item test for Computer Numerical Control (CNC) trainees. **\$32 per test.** Categories include:

- Prints, Drawings, & Forms
- Precision Measurement
- Materials
- Tooling
- Programs
- CNC Mathematics
- Operation
- Turning & Boring

CNC Test

SKU 198: This 60-item test is designed to assess knowledge of concepts important to CNC. Spanish form available. **\$28 per test.** Categories include:

- Layout, Cutting, & Assembly
- Metals & Materials
- Print Reading
- CNC Operations

CNC Operator

SKU 103: This is a 75-item test designed to assess the knowledge and skills of CNC operators. **\$32 per test.** Categories include:

- General CNC Knowledge
- Tape Code
- M-Codes
- Coordinate Systems & Program Structure
- Operations
- Interpolation
- Tool Compensation

Updated
in 2025

Machinist

SKU 18: This 60-item test is used to select Machinists. **\$28 per test.**

Categories include:

- Heat Treating
- Mechanical Principles & Repair
- Layout, Cutting, & Assembly
- Machine Tools
- Print Reading
- Tools, Materials, & Equipment
- Steel, Metals, & Materials
- Machine Shop Lubrication
- Rigging

SKU 101: This is a shortened, 45-item version of the Machinist test without Heat Treating; Steel, Metals, & Materials; and Machine Shop Lubrication. **\$28 per test.**

Welder, Repair & Maintenance

SKU 230: This 60-item test measures knowledge and skills for maintenance workers in the area of welding. **\$28 per test.** Categories include:

- Print Reading
- Welding Defects
- Welding Processes
- Filler Metals
- Repair Welding & Surfacing
- Types of Welds
- Processes Related to Welding
- Tools, Machines, & Equipment
- Types of Joints
- Welding Metals

WeldTest

SKU 15: A 60-item test for applicants and incumbents for production jobs where welding knowledge and skills are necessary. **\$28 per test.**

Categories include:

- Print Reading
- Tools, Machines, Materials, & Equipment
- Welding, Cutting Torch, & Arc Air Cutting
- Mobile Equipment & Rigging
- Welder Maintenance & Operation
- Production Welding Practices

Facilities Maintenance

■ BldgTest

SKU 27: This is a 60-item test for use in selecting building maintenance technicians who have knowledge in the following areas: Electrical; Print Reading; Plumbing; HVAC; General Repairs; Carpentry; Painting; Masonry; and Maintenance Management. Alternate and Spanish forms available. **\$28 per test.**

■ Facilities Maintenance Technician

SKU 246: This 60-item test is a cross between our BldgTest and our Maintenance Troubleshooter test, a result of requests from customers looking for a maintenance test to be used in manufacturing or processing facilities where personnel perform both building and machine maintenance. Categories include: General Building Maintenance; Prints & Drawings; HVAC & Auxiliary Systems; Plumbing & Piping; Mechanical; and Electrical. **\$28 per test.**

■ Air Conditioning Specialist

SKU 40: This 60-item test is designed to assess knowledge and skills in the area of air conditioning and HVAC. Spanish form available. **\$28 per test.**

■ Refrigeration

SKU 155: This 100-item test is designed to test knowledge and skills related to ammonia refrigeration. Categories include: Welding, Burning, & Heat-Treating; Mechanical; Pneumatics; HVAC & Refrigeration; and Electrical. **\$32 per test.**

■ Refrigeration Mechanic

SKU 56: This 130-item test was originally designed for a frozen foods plant and is used to test knowledge and skills of refrigeration mechanics. Categories include: Electrical Print Reading; Lubrication; Welding, Burning, & Heat-Treating; Mechanical; Pneumatics; Shop Machines & Equipment; HVAC & Refrigeration; and Electrical. **\$32 per test.**

■ Carpenter

SKU 146: This 60-item test was designed to assess knowledge and skills in the area of construction. Categories include: Framing, Walls, & Floors; Stairs, Scaffolds, & Ladders; Finishing, Trim, Repair, & Fabrication; Concrete Work, Shoring, & Surveying; Print Reading & Mathematics; and Tools, Materials, & Equipment. **\$28 per test.**

■ Additional Facilities Maintenance Tests

SKU 70: Construction (Carpenter/Painter/Sheeter)

SKU 222: Furnace Installation and Repair

SKU 232: RigTest

SKU 234: Installer (Windows/Doors)

Maintenance Planning

■ Maintenance Planner

SKU 159: A 60-item test for use in selecting individuals who will be planning and coordinating maintenance projects. **\$28 per test.**

Categories include:

- Electrical
- Mechanical
- Print Reading
- Computer & CMMS
- Planning
- Safety

■ Maintenance Manager

SKU 197: This 60-item test is intended for use with applicants for, and incumbents of, jobs where practical mechanical, electrical, and leadership knowledge and skills are necessary parts of maintenance job activities. Includes mechanical, electrical, and leadership categories. **\$28 per test.**

■ Additional Maintenance Planning Tests

SKU 63: Project Engineer

About Us/Company History

Ramsay Corporation, est. 1973 by Roland T. Ramsay, Ph.D., is a human resources consulting firm and publisher of off-the-shelf and custom-designed employment assessments. We specialize in the staffing of new facilities and in the evaluation and classification of skilled trades' employees. Our assessments are used for pre-employment hiring, as well as for promotion, pay-for-knowledge, or training diagnostics.

We provide basic skills and aptitude tests, people skills tests, and various skill levels of electrical, mechanical, and multicraft technical tests. Most assessments are multiple choice and are available in paper and online formats. Our tests provide an easy, reliable way to improve your hiring, training, and promotion processes.

RAMSAY CORPORATION
Expertise in Assessments

Fleet Operations and Maintenance

■ Mobile Equipment Operator

SKU 88: A 50-item test measuring knowledge of safe and effective use of mobile and related equipment. **\$28 per test.**

Categories include:

- Operation
- Material Handling
- Cleaning & Lubrication
- Inspection
- Piling
- Loading & Unloading
- Railroad Equipment
- Traveling
- Hooks & Slings
- Signals
- Forklifts
- Booms of Cranes

■ Mobile Equipment Mechanic

SKU 45: This 60-item test is aimed at maintenance and repair of mobile equipment, including identification, diagnostics and functions, and troubleshooting. **\$28 per test.**

Categories include:

- Electrical Systems
- Pneumatics & Hydraulics
- Print Reading
- Welding and Rigging
- Pumps and Piping
- Mechanical Maintenance
- Shop Machines, Tools, Materials, & Equipment
- Internal Combustion Engines

■ Auto Technician

SKU 28: A 60-item test to assess inspection, diagnosis, and repair knowledge and skills in areas including: Electrical and Electronic Systems; Accessories, Mechanical Maintenance, and Equipment Installation; Prints, Schematics, & Diagrams; Welding, Tools, Materials, and Equipment; Power Transmission and Lubrication; Fuel Systems and Internal Combustion Engines; and Cooling and Heating Systems. **\$28 per test.**

■ Diesel Mechanic

SKU 131: This 50-item test measures knowledge and skills in inspection, maintenance, and repair of diesel engines. **\$28 per test.**

Categories include:

- Diesel Engines & Power Trains
- Injector Systems, Exhaust, & Emission Controls
- Electrical Systems, Controls, & Sensors
- Brakes & Air Systems
- Steering & Suspension

■ Bus Mechanic

SKU 129: Similar to the Diesel Mechanic test, this 60-item test adds a section on Passenger Safety and Comfort. **\$28 per test.**

People Skills

■ Team Skills

SKU 66: A 35-item test of team knowledge and skills in the following areas: Conflict Resolution; Group Dynamics; Communication Skills; Interpersonal Skills; Team Decision-Making; Productivity & Motivation; and Leader & Member Skills. Spanish form available. **\$20 per test.**

■ Management/Leadership

SKU 73: Management & Supervisory Skills

SKU 156: Leadership Skills

These two 40-item tests assess knowledge in the following areas: Planning; Motivating; Organizing; Communicating; and Leadership. **\$20 per test.**

■ Sales Skills

SKU 67: This is a 48-item test of sales knowledge in the following areas: Prospecting Skills; Interpersonal Skills; Communication/Expressiveness Skills; Product Knowledge; Confidence; Listening Skills; Persistence; Closing Skills; Follow-up Skills; Negotiating Skills; Honesty; and Motivation. **\$20 per test.**

■ Customer Service HR Skills

SKU 137: A 25-item test of skills measuring both customer service and human resources abilities in the areas of Planning, Organizing, Communicating, and Conflict Resolution. **\$20 per test.**

■ Service Skills Survey

SKU 236: This is a pre-employment measure that is designed to assess job candidates for roles where customer service is important. Characteristics being measured include: Responsibility, Sociability, Emotional Stability, and Personability. Follow-up interview questions will be provided based on a candidate's results. The measure can be completed in fewer than 15 minutes. **\$13 per test.**

■ Dependability Survey

SKU 244: This is a pre-employment measure that is designed to assess the dependability of job candidates. The following characteristics will be measured for each candidate: Attendance, Attitude Toward Work and Organization, Conscientiousness, Avoidance of Risky Behavior, and Rule Adherence. The measure can be completed in fewer than 15 minutes. **\$13 per test.**

■ Employee Reliability Inventory:

The ERI® contains 81 "True – False" statements which are written at a sixth grade reading level. The ERI consists of 7 separate scales and is designed to assess job applicants with respect to reliable and productive behavior. The ERI has demonstrated criterion-related validity and does not result in adverse impact with respect to race, gender, or age.

\$16.50 per test plus a one-time setup fee of \$99.00.

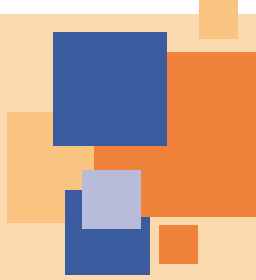
RAMSAY CORPORATION

Expertise in Assessments

Boyce Station Offices
1050 Boyce Road
Pittsburgh, PA 15241-3907

(412) 257-0732 *Phone*
(412) 257-9929 *Fax*

Email: sales@ramsaycorp.com
www.ramsaycorp.com



TESTS FOR SKILLS ASSESSMENT AND DEVELOPMENT 2025 CATALOG

RETURN SERVICE REQUESTED