

RAMSAY CORPORATION

Expertise in Assessments

TESTS FOR SKILLS ASSESSMENT AND DEVELOPMENT 2021 CATALOG

Ramsay Corporation

Boyce Station Offices
1050 Boyce Road
Pittsburgh, PA 15241-3907

Phone (412) 257-0732

Fax (412) 257-9929

Email sales@ramsaycorp.com

Web www.ramsaycorp.com

Aptitude	4
Basic Skills	5
Crafts & Skilled Trades	6 - 18
■ Electrical Assessments	6
■ Mechanical Assessments	8
■ Diagnostic Testing	10
■ MultiCraft Assessments	12
■ Controls & Instrumentation	13
■ Fabrication	14
■ Facilities Maintenance	16
■ Maintenance Planning	17
■ Fleet Operations & Maintenance	18
People Skills	19

2021 CATALOG

Online Testing

Benefits include:

- Ease of administration
- Immediate and accurate results
- No delivery cost
- Complimentary access to test manuals
- Variety of metrics, including local and national percentile rankings and the ability to export data to Excel
- Simplified and improved test security, with no hard copies to secure
- Ability to delegate responsibilities, with a variety of permission levels available
- **New!** Optional scrambled version of tests

Scrambled Tests

Many of our online tests are now available in a scrambled version, which means that the order of questions within each category is randomized. This improves test security, e.g. when retesting candidates or in testing situations where test-takers might sit next to each other or talk about test content. Please check our online catalog to determine whether a scrambled version is available. **Add \$2/test.**

CRUCIAL INFORMATION ABOUT TEST DATA SECURITY:

At both a food plant and a metals plant, several custom-made tests have been compromised. Test Administrators and Managers must be extra vigilant in monitoring for cameras in cell phones, pens, and watches.

Manuals

Manuals are available for most of our tests. The manuals include a description about the development of the test, reliability data and item analyses for different subsets of test takers, available content- and criterion-related validity data, normative data and percentile rankings. Manuals do NOT contain copies of tests or answer keys. Manuals are available to download free with the purchase of online tests.

Printed manuals are \$25 per manual. The SKU is the same as the related test.

Test Validation

We suggest completion of a validation study for an organization that meets any of the following criteria:

- Is a highly visible national or international company
- Has more than 200 employees
- Has a labor agreement
- Has a federal contract
- Has ever had an EEO charge
- Needs professional assistance for setting cutting scores on tests

The *Uniform Guidelines on Employee Selection Procedures* (1978), developed by the EEOC, Civil Service Commission, Department of Labor, and Department of Justice, are intended to establish a uniform federal position in the area of prohibiting discrimination in employment practices.

A validated test is usually the product of research by a psychologist. The resulting validation report is the documented evidence by a professional researcher of the validity of the selection procedure. In the event of complaint or litigation, the report would usually be entered into evidence. In addition, the author would provide testimony that the report reflects generally-accepted professional practice and is in conformance with the requirements of the *Uniform Guidelines on Employee Selection Procedures*.

Information about the Catalog

Prices shown are for 20 or more copies of the same title. You may purchase fewer than 20, but the price increases. Volume discounts are available. For a complete list of tests, please see our online catalog at www.ramsaycorp.com/catalog.

Please call us at (412) 257-0732 for more information, suggestions for the most applicable assessments for your use, or to place an order for fewer than 20 tests.

Understanding the Data

Reliability (KR_{20}) — This is a measure of the internal consistency of a test that has items that are scored dichotomously (right or wrong). The range is 0 to 1, where 0 = no reliability and 1 = perfect reliability. The KR_{20} may be influenced by the difficulty of the test, the spread in scores, and the length of the test. (.85+ = Excellent; .75-.84 = Very Good).

Mean — Average of a data set, so the mean is the average score on a test.

Standard Deviation — This is a measure of how dispersed, or spread out, the scores on a test are relative to the mean score.

Standard of Error of Measurement (SEM) — This number gives an idea of the precision of the test. It is a measure of the extent to which an individual's test score might differ from their "true" score (i.e. if they took the test several times and you averaged their scores). The SEM is directly related to a test's reliability. The larger the SEM, the lower the reliability of a test.

Aptitude Tests

Aptitude tests measure a person's ability to learn and understand concepts and principles. They are NOT designed to measure a person's learned knowledge or skills, but rather the potential to be successful in an apprenticeship or production trainee program.

■ Mechanical Aptitude

SKU 110: Developed as a quick evaluation of a person's mechanical aptitude in the areas of: Home Settings; Work – Production & Maintenance; School – Science & Physics; and Hand & Power Tools. This test contains 36 items in a multiple-choice format. In a group of 16,872 applicants, reliability was .78 with a mean score of 24.65, a standard deviation of 5.24, and a standard error of measurement of 2.46. In a sample of 159 technical school trainees, test scores correlated at .48 with mechanical job knowledge and .40 with GPA. Alternate and Spanish forms available. **\$26 per test.**

■ Electrical Aptitude

SKU 111: Developed as a quick evaluation of a person's electrical aptitude in the areas of: Mathematics; Electrical Concepts; Process Flow; Signal Flow; Electrical Schematics; and Electrical Sequences. This test contains 36 items in a multiple-choice format. In a group of 945 applicants, reliability was .81 with a mean score of 25.47, a standard deviation of 5.31, and a standard error of measurement of 2.31. In a sample of 97 technical school trainees, test scores correlated at .41 with electrical job knowledge and .41 with GPA. Alternate and Spanish forms available. **\$26 per test.**

■ MultiCraft Aptitude

SKU 121: Developed as a quick evaluation of a person's mechanical and electrical aptitude, this test measures the same constructs as the mechanical and electrical aptitude tests, but may be used for assessment of applicants who require aptitude in both areas. This test contains 40 items in a multiple-choice format. In a group of 7,415 applicants, reliability was .82 with a mean score of 27.49, a standard deviation of 6.03, and a standard error of measurement of 2.56. At a communications organization, scores for 121 Instrument Technicians correlated at .21 with work performance quality. Alternate and Spanish forms available. **\$26 per test.**

Updated
in 2020

Experience Levels

- ▶ **Aptitude:** Requires no previous training; measures a person's ability to learn concepts and principles
- ▶ **Entry:** Has 1-2 years of training or experience, but needs an additional 2-3 years of training
- ▶ **Trainee:** Has 2-3 years of training or experience, but needs another 1-2 years of training
- ▶ **Journey:** Has 2-5 years of training and experience
- ▶ **Advanced Journey-Level:** C, B, and A level tests for starting, intermediate, and advanced candidates

Basic Skills Tests

NEW
in 2020

■ SkillScreen

SKU 245: For high-volume testing applications, Ramsay Corporation has developed a quick, 20-item basic skills measure. Contact us for more information.

\$10 per test. \$8 per test for over 5000 in one year.

■ Combined Basic Skills

SKU 200: This assessment was developed to enable a quick evaluation of literacy and performance skills required in manufacturing and processing. The four component parts are: Reading; Arithmetic; Inspection & Measurement; and Process Monitoring & Problem Solving. Alternate and Spanish forms available. **\$18 per test.**

Specialized Combined Basic Skills tests available:

SKU 201: Chemical Operator

SKU 206: Team Skills

SKU 202: Custodial Services

SKU 207: Water Treatment

SKU 203: Electrical

SKU 210: Customer Service

SKU 204: Food Industry

SKU 211: Tools

SKU 205: Mechanical

SKU 212: Clerical

■ Reading Tests

Designed to measure the ability to read, comprehend, and answer written questions based on a printed passage. Most tests are 40 questions covering five passages with progressively higher levels of readability. Please see our website or contact us to help you select an appropriate reading test for your needs. **\$13 per test.**

■ Arithmetic Tests

Developed to evaluate the ability to perform basic computations at various levels of difficulty. All tests include basic arithmetic using whole numbers. Test options include fractions, decimals, percentages, reading tables and charts, simple formulas, and word problems. Please see our website or contact us to help you select a test for your needs. **\$13 per test.**

■ Quality Control & Other Basic Skills Tests

SKU 228: Assembly Test

SKU 135: Pre-Print Reading

SKU 133: Basic Computer Skills

SKU 93: Precision Measurement

SKU 91: Checking Accuracy

SKU 90: Process Flow

SKU 158: Inspection

SKU 37: Inspection & Measurement

SKU 139: Writing Test

SKU 4: Measurement

SKU 24: Reading Electrical Drawings & Schematics

Electrical Assessments

Test technicians for proficiency in the following categories:

- Digital & Analog Electronics
- Schematics & Electrical Print Reading
- Power Supplies
- Motors
- Controls
- Basic AC/DC Theory
- Construction, Installation, & Distribution
- Test Instruments
- Computers & PLCs
- Mechanical, Equipment Operation, & Hand and Power Tools
- Electrical Maintenance

■ Electrical Learner Series

These tests were designed to be less difficult than our Electrical Entry test, but more demanding than a basic skills battery. **\$13 per test.**

SKU 171: Reading

SKU 174: Troubleshooting & Problem Solving

SKU 172: Arithmetic

SKU 175: Basic Electricity

SKU 173: Electrical Print Reading

■ Electrical Entry

SKU 195: A 60-item, entry-level test of knowledge and skills. Does NOT include Computers & PLCs. In a group of 734 candidates, reliability was .88 with a mean score of 39.94, a standard deviation of 9.37, and a standard error of measurement of 3.25. **\$26 per test.**

■ Electrical Maintenance Trainee

SKU 17: For use in selecting electrical trainees. The test contains 60 items. In a group of 2,314 candidates, reliability was .82 with a mean score of 26.16, a standard deviation of 8.39, and a standard error of measurement of 3.56. Alternate and Spanish forms available. **\$26 per test.**

Updated
in 2020

■ ElecTest

SKU 47: A 60-question test used for selection of journey-level electrical repair and maintenance candidates. In a group of 1,197 candidates, reliability was .83 with a mean score of 29.95, a standard deviation of 8.59, and a standard error of measurement of 3.54. Alternate and Spanish forms available. **\$26 per test.**

■ Industrial Electrician

SKU 231: This 60-item test focuses more heavily on diagnostics and troubleshooting in the industrial setting than our ElecTest. It omits component and sub-component level electronics such as transistors, logic gates, and single-function chips, and focuses on troubleshooting of user-serviceable components and proper installation and maintenance. In a group of 1,042 candidates, reliability was .87 with a mean score of 33.97, a standard deviation of 9.73, and a standard error of measurement of 3.51. **\$26 per test.**

NEW
in 2019

Electrical Troubleshooting

SKU 241: A 36-item, journey-level troubleshooting test. Provides a higher-level test than the one in our Electrical Learner Series.
\$26 per test.

Categories include:

- AC/DC Circuits
- Motors
- Construction, Installation & Distribution
- Schematics & Print Reading
- Computers & PLCs

Maintenance Electrician B & A

SKU 179: Maintenance Electrician B

SKU 178: Maintenance Electrician A

For use in selecting manufacturing or processing electrical maintenance candidates. Each test contains 60 items. Maintenance Electrician B is a journey-level test with more focus on motors and power supplies than ElecTest. Maintenance Electrician A is more difficult than Maintenance Electrician B. Data for both tests indicate very good to excellent reliability. \$26 per test.

	N	Reliability Coefficient	Mean Score	Standard Deviation	Standard Error of Measurement
Maint. Elec. B	755	.85	25.59	9.08	3.52
Maint. Elec. A	1,048	.77	26.00	7.18	3.44

Additional Electrical Tests

SKU 105: Electrician (Chemical)

SKU 152: Electrical Safety Knowledge

SKU 168: Commercial/Residential Electrician



! IMPORTANT NOTICE ABOUT TEST PROCTORING

All of Ramsay Corporation's tests must be given in a proctored environment. This includes both **paper AND online** assessments.

What does this mean?

In order for you to get the best results possible from your testing, a proctor should **verify the identity** of the test taker, collect and secure cell phones or other electronic devices, **including Apple watches**, and monitor that test takers are not receiving assistance from others or looking up answers. The proctor should also make sure that test takers are not taking pictures of the test or otherwise copying test questions in order to look up answers for retesting or to share with other test takers. Once a test is compromised, it has little value to you.

Please contact us if you have questions about proctoring or need assistance with remote proctoring options.

Mechanical Assessments

These tests are designed for selecting mechanical technicians and include the following categories:

- Hydraulics & Pneumatics
- Print Reading
- Welding & Rigging
- Power Transmission
- Lubrication
- Pumps & Piping
- Mechanical Maintenance
- Shop Machines
- Tools, Materials, & Equipment

Mechanical Learner Series

These tests are more demanding of job knowledge than a basic skills battery, but less demanding than our Mechanical Entry Test. **\$13 per test.**

SKU 181: Reading

SKU 184: Reading Prints & Drawings

SKU 182: Arithmetic

SKU 185: Troubleshooting & Problem Solving

SKU 183: Measurement

SKU 186: Basic Mechanical Knowledge

Mechanical Entry

SKU 196: A 60-item, entry-level test of knowledge and skills. In a group of 1,959 candidates, reliability was .86 with a mean score of 37.53, a standard deviation of 8.75, and a standard error of measurement of 3.27. Alternate form available. **\$26 per test.**

Mechanical Maintenance Trainee

SKU 31: For use in selecting mechanical trainees. This test contains 60 items. In a group of 1,659 candidates, reliability was .85 with a mean score of 36.46, a standard deviation of 8.54, and a standard error of measurement of 3.31. Alternate and Spanish forms available. **\$26 per test.**

MecTest

SKU 16: Used for selection of journey-level repair and maintenance candidates. This test contains 60 items. In a group of 8,484 applicants and employed mechanics, reliability was .87 with a mean score of 38.56, a standard deviation of 9.12, and a standard error of measurement of 3.29. Test performance was significantly related to total job performance rating by supervisors; $r(95) = .486, < .01$. Alternate and Spanish forms available. **\$26 per test.**

Mechanical Troubleshooting

SKU 242: A 36-item, journey-level troubleshooting test. **\$26 per test.**

Categories include:

- Print Reading
- Power Transmission
- Lubrication
- Tool Use & Machines
- Pneumatics & Hydraulics
- Pumps & Piping

NEW
in 2019

Mechanical Technician C, B, & A

SKU 189: Mechanical Technician C

SKU 188: Mechanical Technician B

SKU 187: Mechanical Technician A

For use in selecting advanced journey-level metals or manufacturing candidates. Each test has 60 items, with C representing the starting level and A the most advanced. Alternate forms available. **\$26 per test.**

	N	Reliability Coefficient	Mean Score	Standard Deviation	Standard Error of Measurement
Mech. Tech. C	1,012	.82	37.24	7.74	3.28
Mech. Tech. B	277	.82	29.43	8.34	3.54
Mech. Tech. A	893	.80	27.07	7.65	3.42

Additional Tests Available

See our website for a complete list of test titles. The descriptions of the tests include test categories, the number of items in each test, and skill levels.

SKU 57: Cellular Technician

SKU 97: ChemTest

SKU 82: Combustion Control Technician

SKU 123: Drafter (CAD Operator)

SKU 94: Hydraulics

SKU 147: Hydraulic & Pneumatic
Print Reading

SKU 127: Injection Molding Mechanic

SKU 83: Ironworker

SKU 199: Lockout/Tagout

SKU 145: Lubrication Test

SKU 44: Millwright Test

SKU 122: Operating Engineer

SKU 55: PipeTest (Piping & Plumbing)

SKU 143: Pump Test

SKU 107: Sheet Metal Worker

SKU 20: Tool Room Attendant

SKU 109: Toolmaker **Updated 2019**

SKU 138: Wind Turbine Technician

Diagnostic Testing

Many companies wish to evaluate their existing workforce to determine strengths and weaknesses and develop training programs accordingly. Ramsay Corporation's Maintest was initially developed for a Fortune 500 Corporation wanting to provide training to their maintenance workforce. That test has been updated and improved in the current version.

In 2017, Ramsay Corporation developed a new test designed to be used as a diagnostic test for incumbent workers, the MultiCraft Diagnostic Test. More recently, Ramsay Corporation developed two related tests: Electrical Diagnostic Test and Mechanical Diagnostic Test.

■ Maintest

SKU 29: This 153-item, 2½-hour test measures the practical mechanical and electrical job knowledge of maintenance employees. Scored by Ramsay Corporation with results reported online. Measures strengths and weaknesses in 21 areas:

- Hydraulics
- Pneumatics
- Welding
- Power Transmission
- Lubrication
- Pumps
- Piping
- Rigging
- Mechanical Maintenance
- Shop Machines, Tools, & Equipment
- Combustion
- Motors
- Digital Electronics
- Schematics & Print Reading
- Control Circuits
- Power Supplies
- Basic AC/DC Theory
- Power Distribution
- Test Instruments
- Computers & PLCs
- Electrical Maintenance

This test has been used for managers and hourly workers and has been supported by criterion-related and content validation. Percentile ranks are provided so you can compare scores among your workers and against a national sample of more than 18,000 maintenance workers.

	N	Reliability Coefficient	Mean Score	Standard Deviation	Standard Error of Measurement
Maintest	19,618	.92	82.28	19.36	5.48

Maintest Pricing (per administration):

10 – 19 tests: **\$70.00** 20 – 99 tests: **\$50.00** 100+ tests: **\$40.00**

Alternate and Spanish forms available. *(Pricing based on cumulative orders.)*

MultiCraft Diagnostic Test

SKU 235: A recent, 128-item test designed to evaluate incumbent workforces to determine training deficiencies and needs. Measures strengths and weaknesses in areas similar to the Maintest, but in a more condensed way. In a group of 399 candidates, reliability was .92 with a mean score of 66.72, a standard deviation of 17.36, and a standard error of measurement of 4.91. **\$40 per test.**

Electrical Diagnostic Test

SKU 240: This new journey-level test consists of 10 categories, each with 10 questions. **\$40 per test.**



NEW
in 2019

Mechanical Diagnostic Test

SKU 239: This 100-item test features 10 categories, each with 8-12 questions. **\$40 per test.**

NEW
in 2019

Advanced Reporting Features

The use of Ramsay Corporation's scoring system provides you with a standard collection of reports. Advanced reports are available with the addition of "Job Profiles," a set of cut scores to apply to test results. These job profiles are created with the help of Ramsay Corporation, either as a part of a validation study and/or with the purchase of an Enterprise Subscription (**SKU ES1Y**). **\$600 per year.**

An example of an advanced report can be found below. An overview of all available reports can be found by downloading the Technology Solutions Brochure, at www.ramsaycorp.com/technology.

Graphical Report

Our advanced reports include such reports as the Graphical Report which shows the performance of an individual candidate against a set of cut scores designated by a Job Profile.

SECTION	MIN	MAX	STATUS
1. ANALOG AND DIGITAL ELECTRONICS			NOT COMPETITIVE
2. BASIC AC/DC THEORY			NOT COMPETITIVE
3. MECHANICAL, PNEUMATICS AND HYDRAULICS			COMPETITIVE
4. COMPUTER AND PLC			NOT COMPETITIVE
5. CONSTRUCTION, INSTALLATION AND MAINTENANCE			COMPETITIVE
6. INSTRUMENTATION, COMBUSTION AND CONTROL			NOT COMPETITIVE

MultiCraft Assessments

The MultiCraft tests are for technicians who require knowledge of both electrical and mechanical concepts and principles. Areas tested include:

- Hydraulics & Pneumatics
- Welding, Cutting, & Rigging
- Power Transmission, Lubrication, Mechanical Maintenance & Shop Machines, and Tools & Equipment
- Pumps, Piping, & Combustion
- Motors, Control Circuits, and Schematics & Print Reading
- Digital & Analog Electronics, Power Supplies, Computers & PLCs, and Test Instruments
- Basic AC/DC Theory, Power Distribution, & Electrical Maintenance

■ MultiCraft Entry

SKU 194: A 60-item, entry-level test of knowledge and skills. In a group of 1,019 candidates, reliability was .87 with a mean score of 41.06, a standard deviation of 8.68, and a standard error of measurement of 3.13. **\$26 per test.**

■ MultiCraft Trainee

SKU 116: Developed for use with applicants or employees who have at least one year of mechanical and electrical training or experience. This test includes 60 questions in 7 categories. In a group of 1,160 candidates, reliability was .84 with a mean score of 33.38, a standard deviation of 8.46, and a standard error of measurement of 3.38. Alternate and Spanish forms available. **\$26 per test.**

■ MultiCrafTest

SKU 100: This 60-question test is for use in selecting journey-level multicrafted maintenance technicians. Data collected from 3,430 candidates indicate excellent reliability of .86 with a mean score of 29.94, a standard deviation of 9.53, and a standard error of measurement of 3.57. Alternate and Spanish forms available. **\$26 per test.**

Updated
in 2019

■ Maintenance Troubleshooter

SKU 243: This 60-item test provides an alternative to our MultiCrafTest for organizations not requiring knowledge of board-level electronics. In a group of 108 candidates, reliability was .82 with a mean score of 31.43, a standard deviation of 8.58, and a standard error of measurement of 3.64. **\$26 per test.**

NEW
in 2019

■ Mechatronics Technician

SKU 147: This 100-item journey-level test was developed to aid in the selection of maintenance technicians in advanced, automated manufacturing industries. It covers electrical, computer, and mechanical topics. **\$30 per test.**

NEW
in 2020

■ Multi-Skilled Maintenance Mechanic

SKU 220: This 100-item test is intended to assess practical mechanical, electrical, and computer knowledge and skill for maintenance job activities. It includes questions on Schematics & Electrical Print Reading; Process Control & Calibration; Motors, Motor Controls, & AC/DC Theory; Mechanical & Piping; Computer & PLC; Hydraulics & Pneumatics; Welding; Pumps, Power Transmission & Lubrication; and Shop Machines & Rigging. In a group of 206 candidates, reliability was .87 with a mean score of 53.47, a standard deviation of 12.31, and a standard error of measurement of 4.44. **\$30 per test.**

■ C, B, & A Mechanic Evaluation

SKU 192: C Mechanic Evaluation

Updated in 2018

SKU 191: B Mechanic Evaluation

SKU 190: A Mechanic Evaluation

Best used for food, drug, and consumer product industries for use in selecting advanced journey-level manufacturing or processing maintenance candidates. These tests include Electrical and HVAC categories. Each test contains 60 items. NOTE: Each level progresses in difficulty, with A Mechanic being the most advanced. Alternate and Spanish forms available. **\$26 per test.**

	N	Reliability Coefficient	Mean Score	Standard Deviation	Standard Error of Measurement
C Mechanic	947	.85	37.46	8.60	3.33
B Mechanic	1,247	.86	36.11	9.10	3.40
A Mechanic	900	.86	30.97	9.30	3.48

Controls and Instrumentation

■ PLC Test

2016 Plant Engineering Product of the Year Silver Award

SKU 125: This 60-item test, when administered to 1,128 candidates, had a reliability of .84, a mean score of 32.83, a standard deviation of 8.51, and a standard error of measurement of 3.40. **\$26 per test.**

For use in selecting candidates for jobs that require knowledge of:

- PLCs & I/O Basics
- Programming Basics
- Troubleshooting
- Ladder Logic
- Peripherals & Systems
- Relays & Controls

■ Controls Technician

2018 Plant Engineering Product of the Year Bronze Award

SKU 238: A 60-question test that measures the knowledge and skills of a candidate who handles the day-to-day issues or long-term maintenance of PLCs and control systems. In a group of 169 candidates, reliability was .88 with a mean score of 35.01, a standard deviation of 9.50, and a standard error of measurement of 3.29. **\$26 per test.** Categories include:

- Schematics & Logic Reading
- PLC, DCS, & Networking
- Sensors & Feedback
- Basic Automation
- Motors & Drives
- Process Control & Instrumentation
- Power Supplies & Distribution

Variable Frequency Drive Test

SKU 154: This test was developed in response to requests for a means to evaluate the understanding of maintenance and troubleshooting of VFDs in industrial settings. In a group of 116 candidates, reliability was .82 with a mean score of 22.93, a standard deviation of 6.39, and a standard error of measurement of 2.71. **\$26 per test.**

This 40-item multiple-choice test contains questions in the areas of:

- Mechanical & Electrical Motor Theory
- VFD Components
- Drives
- Troubleshooting

Electronics & Instrumentation Technician

SKU 193: A 100-item test for use in assessing E&I Technicians. Data collected for this test indicate excellent reliability. In a group of 580 candidates, reliability was .91 with a mean score of 54.12, a standard deviation of 14.81, and a standard error of measurement of 4.44. **\$30 per test.**

Categories include:

- Digital & Analog Electronics
- Electrical Print Reading, Schematics, & Logic
- Process Control
- AC/DC Theory
- Test Instruments
- Mechanical
- Computer, PLC, & DCS
- Power Distribution
- Construction & Installation
- Motors

ElectronTest

SKU 7: A 60-question test specializing in electronics for use in selecting manufacturing or processing maintenance candidates. In a group of 247 candidates, reliability was .89 with a mean score of 28.89, a standard deviation of 10.51, and a standard error of measurement of 3.49. **\$26 per test.**

Categories include:

- Digital & Analog Electronics
- AC/DC Theory & Schematics
- Motors, Regulators, Electronic Equipment, & Power Distribution
- Power Supplies
- Test Instruments
- Computers & PLCs

Additional Controls & Instrumentation Tests

SKU 104: Instrument Technician (Chemical)

SKU 22: Reading (E&I)

SKU 81: InstrumenTest

SKU 223: Robotics

Fabrication

CNC Trainee

SKU 221: This is a 90-item test for Computer Numerical Control (CNC) operators. In a group of 212 candidates, reliability was .88 with a mean score of 53.12, a standard deviation of 11.49, and a standard error of measurement of 3.98. **\$30 per test.** Categories include:

- Prints, Drawings, & Forms
- Tooling
- Operation
- Precision Measurement
- Programs
- Turning & Boring
- Materials
- CNC Mathematics

Updated
in 2019

CNC Test

SKU 198: This 60-item, journey-level test is designed to assess knowledge and concepts important to CNC. In a group of 142 candidates, reliability was .91 with a mean score of 38.70, a standard deviation of 10.76, and a standard error of measurement of 3.23. Available in Spanish. **\$26 per test.**

Categories include:

- Layout, Cutting, & Assembly
- Metals & Materials
- Print Reading
- CNC Operations

CNC Operator

SKU 103: This is a 98-item, journey-level test designed to assess the knowledge and skills of CNC operators. This test, when administered to 213 candidates, had a reliability of .91, mean score of 58.40, a standard deviation of 13.86, and a standard error of measurement of 4.16. **\$30 per test.** Categories include:

- General CNC Knowledge
- Tape Code
- M-Codes
- Coordinate Systems & Program Structure
- Operations
- Interpolation
- Tool Compensation

Machinist

SKU 18: This 60-item test is used to select journey-level Machinists. In a group of 553 candidates, reliability was .88 with a mean score of 34.00, a standard deviation of 9.51, and a standard error of measurement of 3.29. **\$26 per test.**

Categories include:

- Heat Treating
- Mechanical Principles & Repair
- Layout, Cutting, & Assembly
- Machine Tools
- Print Reading
- Tools, Materials, & Equipment
- Steel, Metals, & Materials
- Machine Shop Lubrication
- Rigging

SKU 101: This is a shortened, 45-item version of the Machinist test without Heat Treating; Steel, Metals, & Materials; and Machine Shop Lubrication. **\$26 per test.**

Welder, Repair & Maintenance

SKU 230: This 60-item, journey-level test measures knowledge and skill for maintenance workers in the area of welding. In a group of 73 candidates, reliability was .88 with a mean score of 38.01, a standard deviation of 9.36, and a standard error of measurement of 3.24. **\$26 per test.** Categories include:

- Print Reading
- Welding Positions
- Welding Defects
- Welding Processes
- Filler Metals
- Repair Welding & Surfacing
- Types of Welds
- Processes Related to Welding
- Tools, Machines, & Equipment
- Types of Joints
- Welding Metals

WeldTest

SKU 15: A 60-item test for applicants and incumbents for production jobs where journey-level welding knowledge and skill are necessary. In a group of 568 candidates, reliability was .89 with a mean score of 42.76, a standard deviation of 9.30, and a standard error of measurement of 3.08. **\$26 per test.**

Categories include:

- Print Reading
- Tools, Machines, Materials, & Equipment
- Welding, Cutting Torch, & Arc Air Cutting
- Mobile Equipment & Rigging
- Welder Maintenance & Operation
- Production Welding Practices

Facilities Maintenance

■ BldgTest

SKU 27: This is a 60-item test for use in selecting building mechanics who have knowledge in the following areas: Electrical; Print Reading; Plumbing; HVAC; General Repairs; Carpentry; Painting; Masonry; and Maintenance Management. In a group of 1,229 applicants, reliability was .81, with a mean score of 39.20, a standard deviation of 7.33, and a standard error of measurement of 3.20. Alternate and Spanish forms available. **\$26 per test.**

■ Facilities Maintenance Technician

SKU 246: This 60-item test is a cross between our BldgTest and our Maintenance Troubleshooter test, a result of requests from customers looking for a maintenance test to be used in manufacturing or processing plants where personnel perform both building and machine maintenance. Categories include: General Building Maintenance; Prints & Drawings; HVAC & Auxiliary Systems; Plumbing & Piping; Mechanical; and Electrical. **\$26 per test.**

**NEW
in 2020**

■ Air Conditioning Specialist

SKU 40: This 60-item test is designed to assess knowledge and skill in the area of air conditioning and HVAC. In a group of 226 candidates, reliability was .85, with a mean score of 34.38, a standard deviation of 8.84, and a standard error of measurement of 3.42. Spanish form available. **\$26 per test.**

■ Refrigeration

SKU 155: This 100-item journey-level test is designed to test knowledge and skills related to ammonia refrigeration. Categories include: Welding, Burning, & Heat-Treating; Mechanical; Pneumatics; HVAC & Refrigeration; and Electrical. In a group of 84 candidates, reliability was .85, with a mean score of 53.30, a standard deviation of 12.74, and a standard error of measurement of 4.41. **\$30 per test.**

■ Refrigeration Mechanic

SKU 56: This 130-item test was designed for a frozen foods plant and is used to test knowledge and skills of refrigeration mechanics. Categories include: Electrical Print Reading; Lubrication; Welding, Burning, & Heat-Treating; Mechanical; Pneumatics; Shop Machines & Equipment; HVAC & Refrigeration; and Electrical. In a group of 399 candidates, reliability was .90, with a mean score of 65.15, a standard deviation of 16.44, and a standard error of measurement of 5.20. **\$30 per test.**

■ Carpenter

SKU 146: This 60-item test was designed to assess knowledge and skill in the area of construction. Categories include: Framing, Walls, & Floors; Stairs, Scaffolds, & Ladders; Finishing, Trim, Repair, & Fabrication; Concrete Work, Shoring, & Surveying; Print Reading & Mathematics; and Tools, Materials, & Equipment. In a group of 74 candidates, reliability was .91, with a mean score of 31.05, a standard deviation of 11.44, and a standard error of measurement of 3.43. **\$26 per test.**

■ Additional Facilities Maintenance Tests

SKU 70: Construction (Carpenter/Painter/Sheeter) **SKU 232:** RigTest

SKU 222: Furnace Installation and Repair

SKU 234: Installer (Windows/Doors)

Maintenance Planning

■ Maintenance Planner

SKU 159: A 60-item test for use in selecting individuals who will be planning and coordinating maintenance projects. In a group of 146 candidates, reliability was .80 with a mean score of 31.47, a standard deviation of 7.71, and a standard error of measurement of 3.45. **\$26 per test.**

Categories include:

- Electrical
- Mechanical
- Print Reading
- Computer & CMMS
- Planning
- Safety

■ Maintenance Manager

SKU 197: This 60-item test is intended for use with applicants for, and incumbents of, jobs where practical mechanical, electrical, and leadership knowledge and skills are necessary parts of maintenance job activities. Includes mechanical, electrical, and leadership categories. In a group of 101 candidates, reliability was .85 with a mean score of 30.11, a standard deviation of 8.91, and a standard error of measurement of 3.45. **\$26 per test.**

■ Additional Maintenance Planning Tests

SKU 63: Project Engineer

SKU 106: Vibration Analysis

About Us/Company History

Ramsay Corporation, est. 1973 by Roland T. Ramsay, Ph.D., is a human resources consulting firm and publisher of off-the-shelf and custom-designed employment assessments. We specialize in the staffing of new facilities and in the evaluation and classification of skilled trades' employees. Our assessments are used for pre-employment hiring, as well as for promotion, pay-for-knowledge, or training diagnostics.

We provide basic skills and aptitude tests, people skills tests, and various skill levels of electrical, mechanical, and multicraft technical tests. Most assessments are multiple choice and are available in paper and online formats. Our tests provide an easy, reliable way to improve your hiring, training, and promotion processes.

RAMSAY CORPORATION
Expertise in Assessments

Fleet Operations and Maintenance

■ Mobile Equipment Operator

SKU 88: A 50-item, journey-level test measuring knowledge of safe and effective use of mobile and related equipment. **\$26 per test.**

Categories include:

- Operation
- Material Handling
- Cleaning & Lubrication
- Inspection
- Piling
- Loading & Unloading
- Railroad Equipment
- Traveling
- Hooks & Slings
- Signals
- Forklifts
- Booms of Cranes

■ Mobile Equipment Mechanic

SKU 45: This 60-item test is aimed at maintenance and repair of mobile equipment, including identification, diagnostics and functions, and troubleshooting. In a group of 282 candidates, reliability was .87 with a mean score of 19.54, a standard deviation of 8.16, and a standard error of measurement of 2.94. **\$26 per test.**

Categories include:

- Electrical Systems
- Pneumatics & Hydraulics
- Print Reading
- Welding and Rigging
- Pumps and Piping
- Mechanical Maintenance
- Shop Machines, Tools, Materials, & Equipment
- Internal Combustion Engines

■ Auto Technician

SKU 28: A 60-item test to assess inspection, diagnosis, and repair knowledge and skills in areas including: Electrical and Electronic Systems; Accessories, Mechanical Maintenance, and Equipment Installation; Prints, Schematics, & Diagrams; Welding, Tools, Materials, and Equipment; Power Transmission and Lubrication; Fuel Systems and Internal Combustion Engines; and Cooling and Heating Systems. In a group of 84 candidates, reliability was .84 with a mean score of 29.73, a standard deviation of 8.54, and a standard error of measurement of 3.42. **\$26 per test.**

Updated
in 2020

■ Diesel Mechanic

SKU 131: This 50-item test measures knowledge and skill in inspection, maintenance, and repair of diesel engines. In a group of 226 candidates, reliability was .77 with a mean score of 27.08, a standard deviation of 6.52, and a standard error of measurement of 3.13. **\$26 per test.**

Categories include:

- Diesel Engines & Power Trains
- Injector Systems, Exhaust, & Emission Controls
- Electrical Systems, Controls, & Sensors
- Brakes & Air Systems
- Steering & Suspension

■ Bus Mechanic

SKU 129: Similar to the Diesel Mechanic test, this 60-item test adds a section on Passenger Safety and Comfort. In a group of 85 candidates, reliability was .79 with a mean score of 31.94, a standard deviation of 7.33, and a standard error of measurement of 3.36. **\$26 per test.**

People Skills

■ Team Skills

Updated
in 2018

SKU 66: A 35-item test of team knowledge and skills in the following areas: Conflict Resolution; Group Dynamics; Communication Skills; Interpersonal Skills; Team Decision-Making; Productivity & Motivation; and Leader & Member Skills. Data for this test given to 4,189 candidates show a reliability of .71, a mean score of 23.08, a standard deviation of 4.51, and a standard error of measurement of 2.43. Spanish form available. **\$17 per test.**

■ Management/Leadership

Updated
in 2019

SKU 73: Management & Supervisory Skills
SKU 156: Leadership Skills

These two 40-item tests assess knowledge in the following areas: Planning; Motivating; Organizing; Communicating; and Leadership. **\$17 per test.**

■ Sales Skills

SKU 67: A test of sales knowledge in the following areas: Prospecting Skills; Interpersonal Skills; Communication/Expressiveness Skills; Product Knowledge; Confidence; Listening Skills; Persistence; Closing Skills; Follow-up Skills; Negotiating Skills; Honesty; and Motivation. Data for this 48-item test given to 268 candidates show a reliability of .81, a mean score of 31.25, a standard deviation of 6.48, and a standard error of measurement of 2.82. **\$17 per test.**

■ Service Skills Survey

SKU 236: This is a pre-employment measure that is designed to assess job candidates for roles where customer service is important. The following personal characteristics will be measured for each candidate: Responsibility, Sociability, Emotional Stability, and Personability. Follow-up interview questions will be provided based on a candidate's results. The measure can be completed in fewer than 15 minutes. **\$12 per test.**

■ Employee Reliability Inventory:

ERI: The ERI® contains 81 "True – False" statements which are written at a sixth grade reading level. The ERI consists of 7 separate scales (A – Freedom from Disruptive Alcohol and Illegal Drug Use; C – Courtesy; E – Emotional Maturity; F – Conscientiousness; H – Trustworthiness; Q – Long Term Job Commitment; and S – Safe Job Performance) and is designed to assess job applicants with respect to reliable and productive behavior. The ERI has demonstrated criterion-related validity and does not result in adverse impact with respect to race, gender, or age.

ERI-WEB is a web-based administration.

\$16.50 per test plus a one-time setup fee of \$50.00.

■ Dependability Survey

NEW
in 2020

SKU 244: This is a pre-employment measure that is designed to assess the dependability of job candidates. The following personal characteristics will be measured for each candidate: Attendance, Attitude Toward Work and Organization, Conscientiousness, Avoidance of Risky Behavior, and Rule Adherence. The measure can be completed in fewer than 15 minutes. **\$12 per test.**

RAMSAY CORPORATION

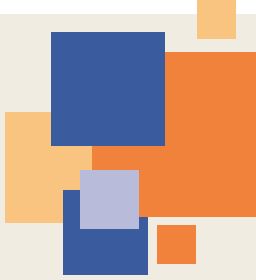
Expertise in Assessments

RETURN SERVICE REQUESTED

Boyce Station Offices
1050 Boyce Road
Pittsburgh, PA 15241-3907

(412) 257-0732 **Phone**
(412) 257-9929 **Fax**

Email: sales@ramsaycorp.com
www.ramsaycorp.com



**TESTS FOR
SKILLS ASSESSMENT
AND DEVELOPMENT
2021 CATALOG**